

A low-angle, upward-looking photograph of several modern skyscrapers with glass facades. The sun is shining brightly from the top center, creating a lens flare effect. The sky is blue with some white clouds. The buildings are arranged in a circular pattern, converging towards the top of the frame.

Corporate Presentation

Eastrong International Logistics Co., Ltd

FEB 2024

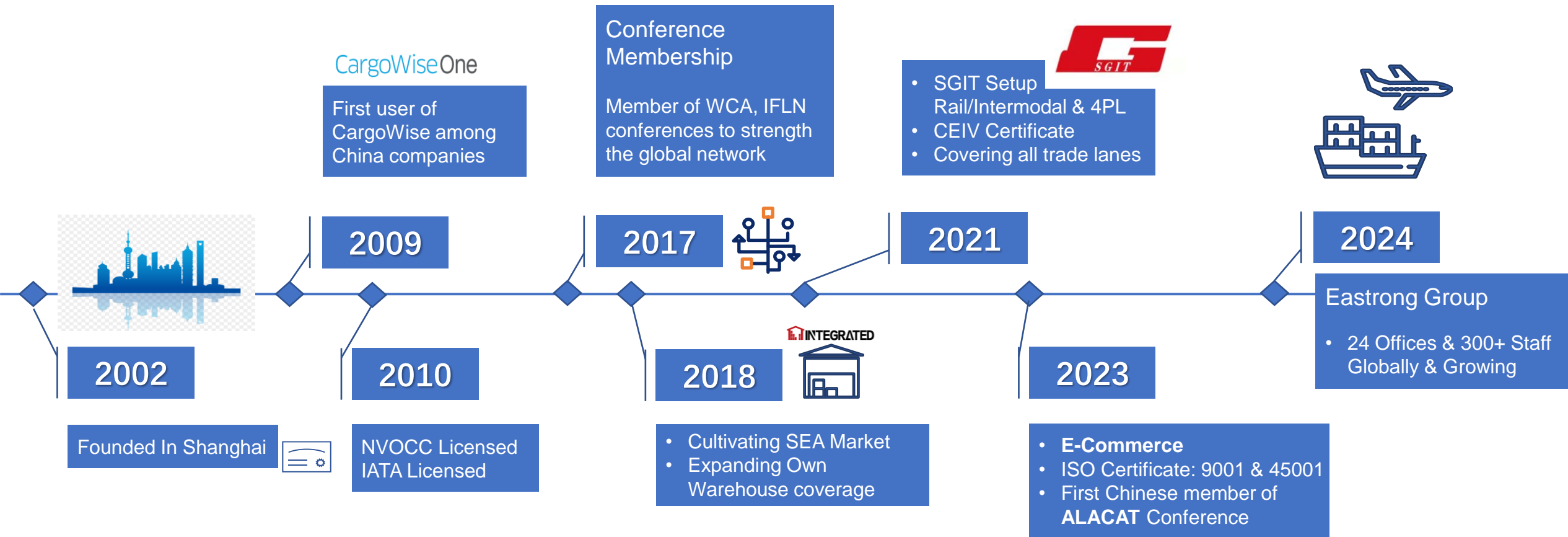
Content

- Company History & Growth
- Expanding Service Network
- Our Capabilities
- Optimization & Digitalization
- Eastrong Green Strategy
- Better Care For Our Customers

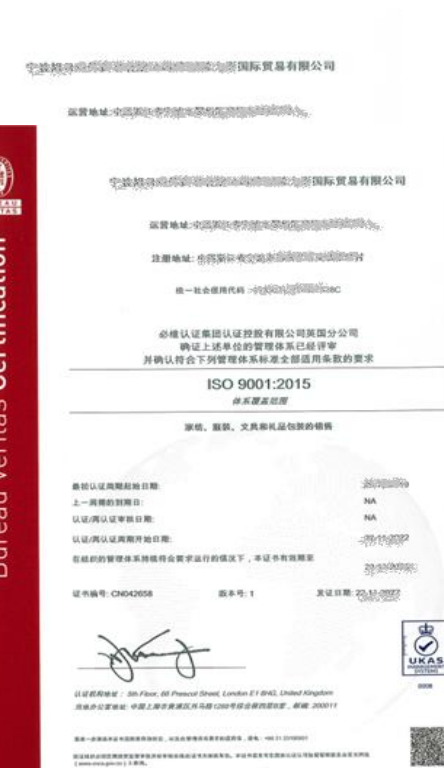


Company History & Growth

Company History & Growth

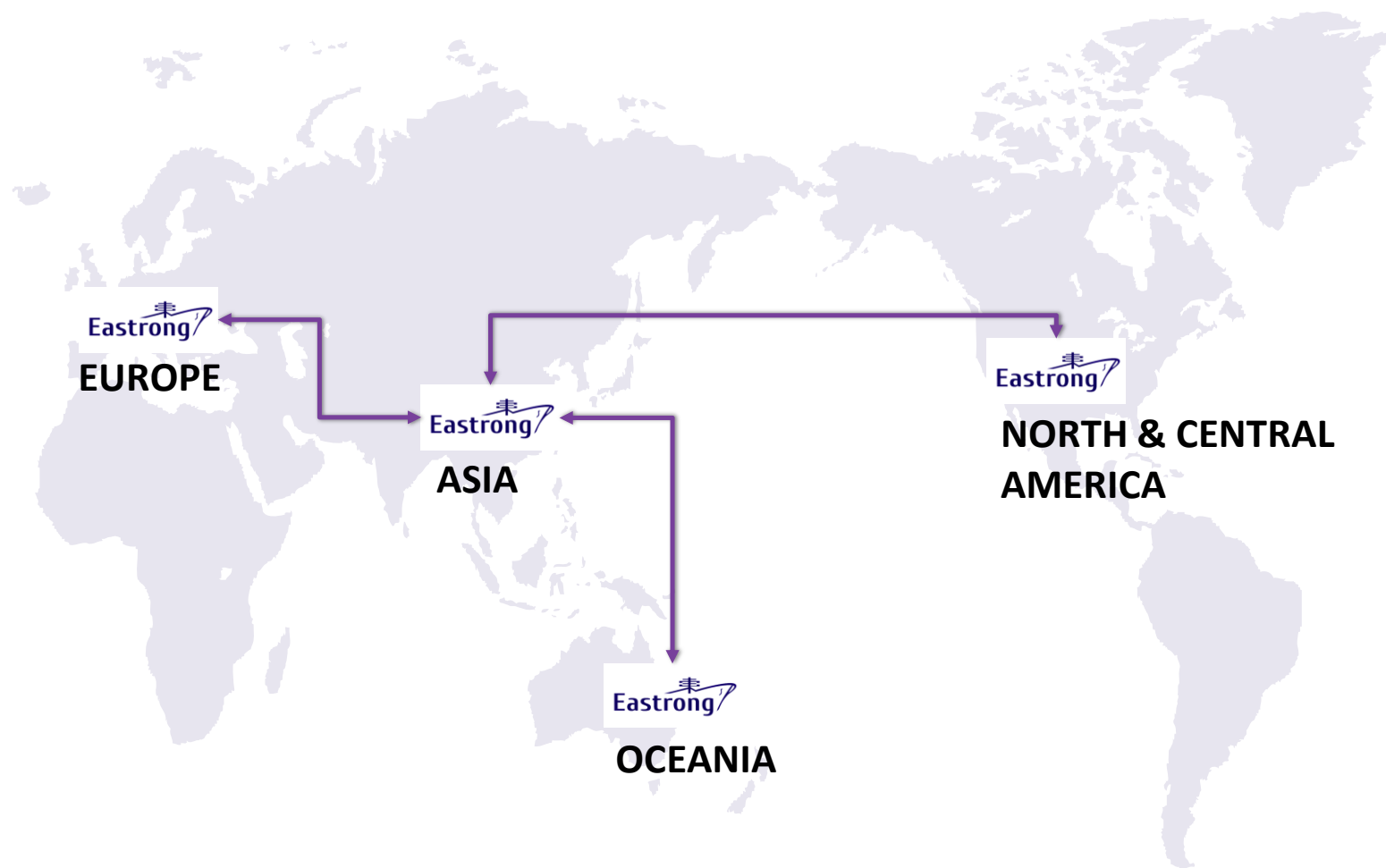


Our Membership & Certificates



Expanding Service Network

Expanding Service Network



120,000
TEUs



1,000
TEUs
(SOC & Charters)



2,000
Tonnes





1,600
TEUs

Expanding Service Network



Eaststrong Offices

➤ Great China Region

- | | | |
|------------|-------------|---|
| ▪ Shanghai | ▪ Tianjin | ▪ Foshan |
| ▪ Ningbo | ▪ Xiamen | ▪ Hong Kong |
| ▪ Shenzhen | ▪ Guangzhou |  |
| ▪ Qingdao | ▪ Dalian |  |

➤ Asia - Others

- | | |
|-------------------|----------------|
| ▪ Singapore, SG | ▪ Bangkok, TH |
| ▪ Ho Chi Minh, VN | ▪ Songkhla, TH |
| ▪ Hanoi, VN | ▪ Jakarta, ID |
| ▪ Penang, MY | ▪ Seoul, KR |
| ▪ Port Kelang, MY | ▪ Dubai, UAE |
| ▪ Johor, MY | |

Our Capabilities

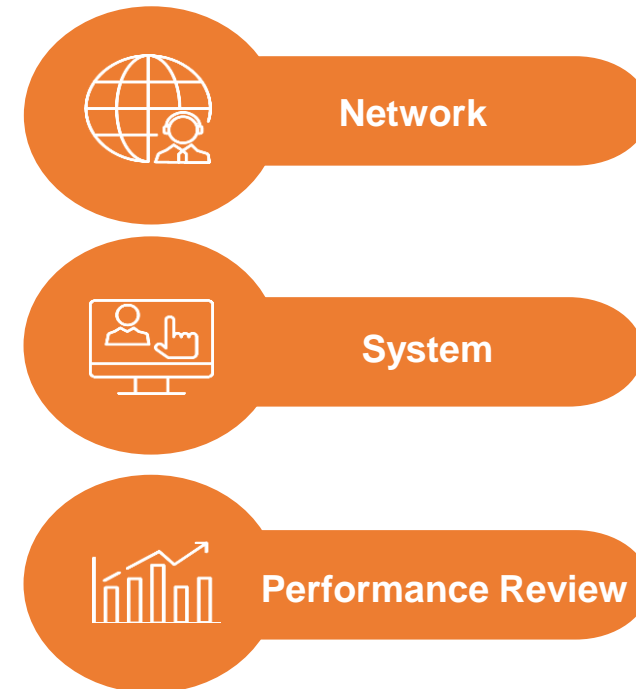
Why Choose Eastrong

Our Competitive Edges

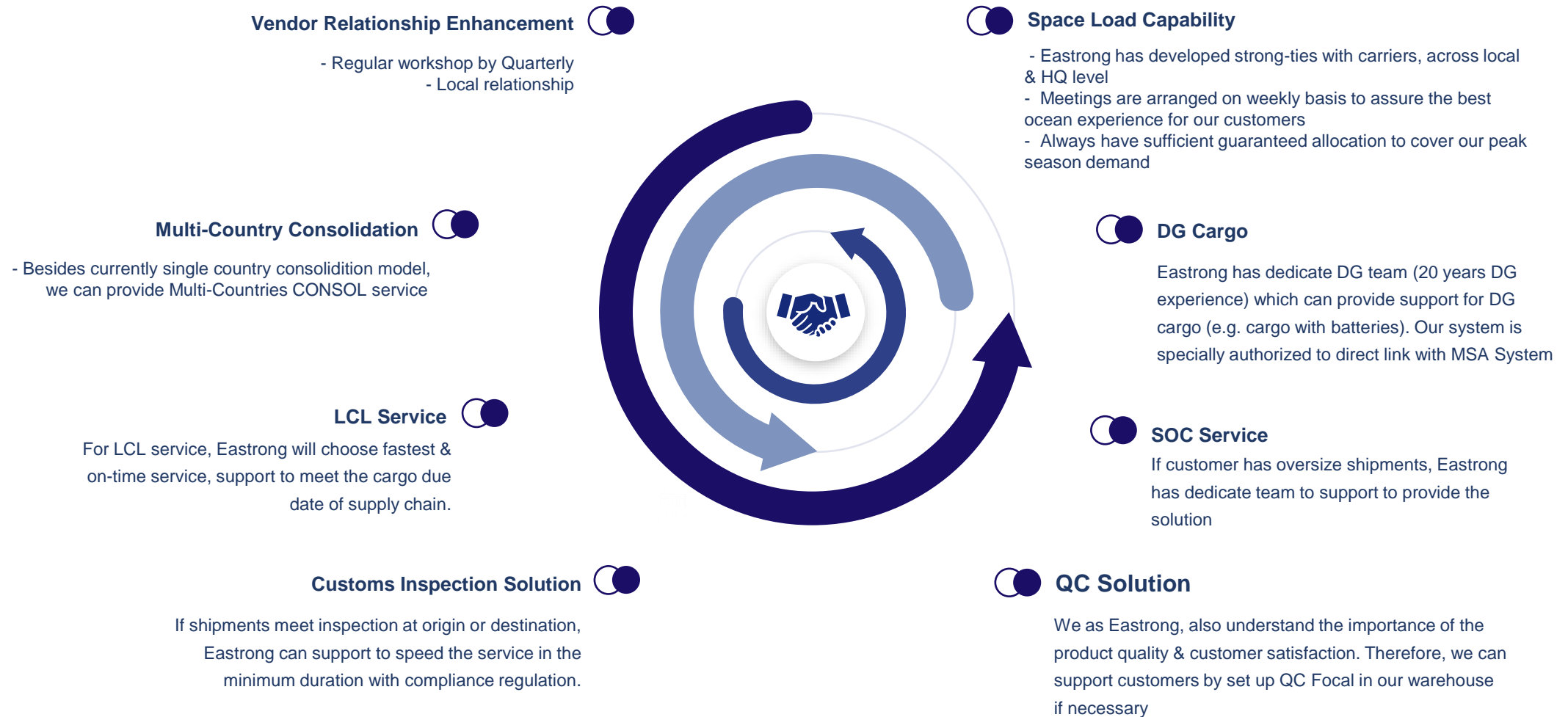
VS. Global Logistics Company



VS. Local Logistics Company



Value-Added Service at Origin



Ocean Products

Key Market Positioning



Relationship

Strategy cooperation with core carriers



20+ YEARS

Act as global freight forwarder
With comprehensive products



TOP 5 NVOCC

Asian-Oceania Trade Lane

Sea Products and Services

- NVOCC / Forwarding
- Core carrier partnerships with ANL / Maersk / Evergreen / ONE / COSCO / OOCL / Yang Ming / Hyundai / ZIM
- Weekly Guarantee Space
- Buyer Consolidation
- Professional Operation Teams
- Advanced Shipping System CargoWise
- PO Management
- Project Logistics / SOC / Charter Service
- FCL / LCL Long haul / Barge
- Customs Brokerage



LCL/Consolidation



LCL/Consolidation services



NINE
CONSOL Hubs



COST
Effective



IMPROVE
Supply Chain Efficiency



ENHANCE
Management Control



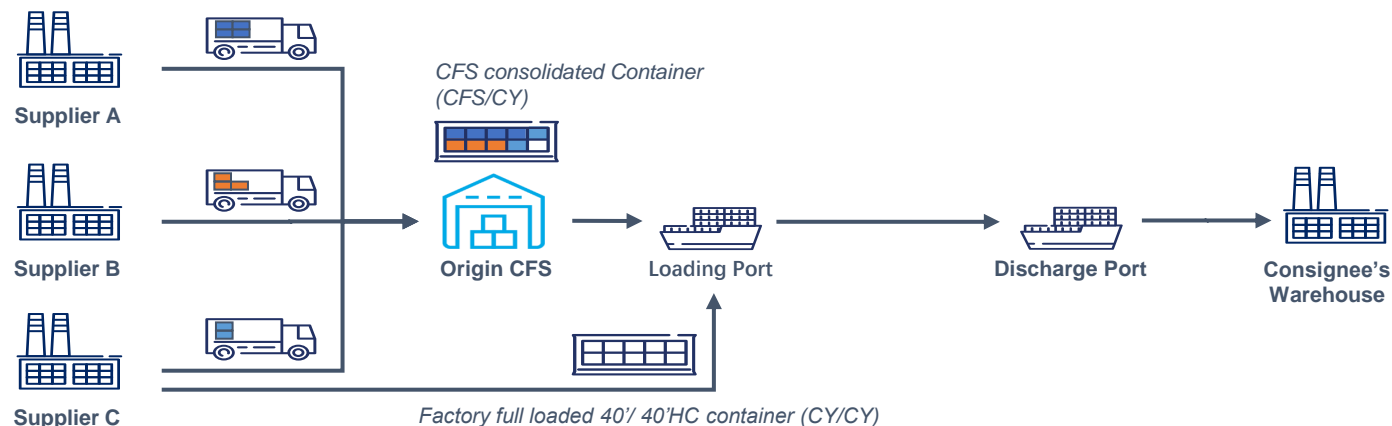
ECO-FRIENDLY
Supply Chain



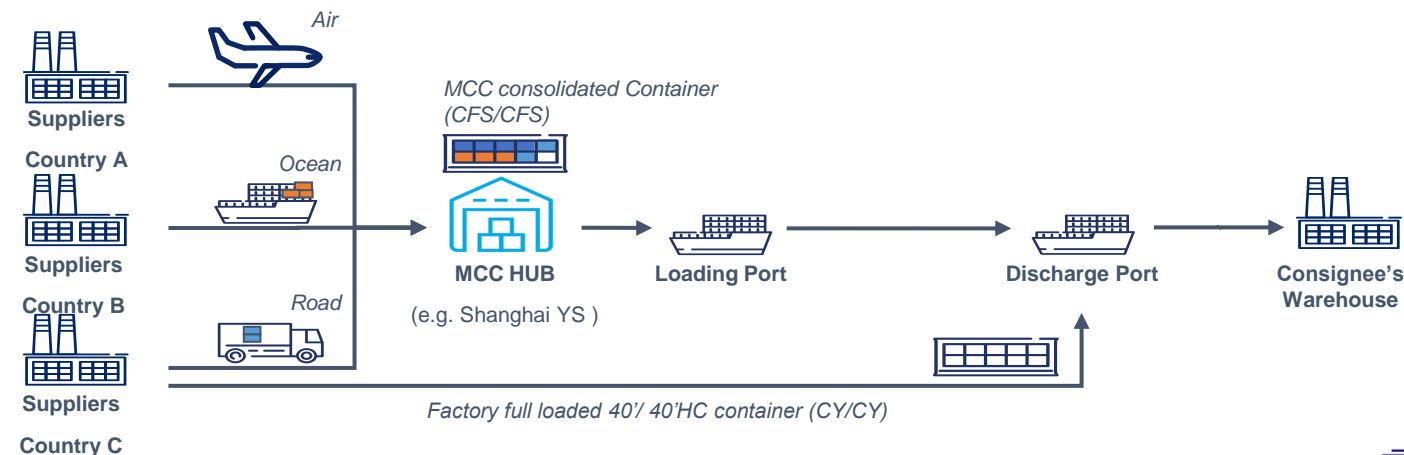
Visibility
Track & Trace



Buyers Consolidation: Consolidate shipments from multiple suppliers at origin



Multi-Country Consolidation: Consolidate shipments from multiple countries at consolidation HUB



Air Freight

Block Space Agreement

- Year-round block space agreement
 - ❖ (CN->AU) with CZ and MU
 - ❖ (CN->DE) with LH and MU
 - ❖ (CN->UK) with HU and MU
- Pick up shipments from vendor to PVG/PEK/CAN/SZX airports
- Documentation application, preparation and customs clearance
- Service level / Transit time selection
- Oversize / DG cargo operations
- IATA CEIV Pharma certified
- Temperature control goods operations
- E-commerce shipments operations
- Cargo tracking & tracing in 7x24

Charter Services

- Customized charter service
- Regular charter plane during peak season
- Close charter partner with MU/CA/HU/JD/PR/JT/LH/MU/HU
- Good relationship with destination airports/terminals
- Quick interstate trucking service within Destination
- Warehousing/Chill room & door delivery



Inter-Continents Rail Service

ICR Services

- Regular service
- Block train exclusively for some VIP customers like Maersk / MEDlog / CEVA etc.
- POL – Zaozuang / Jiaozhou / Rizhao, Shandong province
- POD – Malaszewicze / Warsaw / Duisburg / Hamburg etc.
- Equipment – SOC / COC
- T/T – 25~30 days by different routes

Product Advantage

- Faster than Ocean
- Cheaper than Air freight
- Better weight capacity than Road haulage
- Less weather influence
- Direct transportation
- More safe handling of cargo
- Low-carbon & environmental Friendly



DG Cargoes

Main Business

Provide one-stop door-to-door service for dangerous chemicals, temperature-controlled chemicals and general cargo, including import and export as well as supporting services:

- ❑ Provide special maritime approval for the export of new energy vehicles, exempting DG form
- ❑ Provide U-Turn service in the bonded area
- ❑ Undertake special goods such as dangerous reefers and lithium batteries



Lighters

Over 20 years experience on handling lighter product in China market



Oil & Gas Equipment

Specialized in energy industry and the renewable energy logistics solutions



Battery

Provides solution for the Import & Export of battery and vehicles

Project Cargoes



1



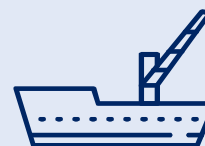
2



3



4



Projects



Specialized in break-bulk, RORO, heavy lifting and integrated projects

Case 1

Vehicles by RORO
From Qingdao to Mombasa

Case 2

Mobile Houses by RORO
From Tianjin to Nelson

Case 3

Ethylene-vinyl acetate copolymer plant intercooler
From Bremerhaven to Qingdao with delivery to Lianyungang

Case 4

Yacht by Breakbulk
From Shanghai to Auckland

Own Warehouse Facility



Shanghai

100,000 sqft in Yangshan,
30KM from YS port

30,000 sqft in Waigaoqiao,
7KM from WGQ port

Xingang

30,000 sqft in GLP
5km from Ningbo port

Qingdao

50,000 sqft in Beilun
6km from Ningbo port

Shanghai

Ningbo

Ningbo

50,000 sqft in Beilun
6km from Ningbo port

China



Shenzhen

30,000sqft in Yantian BLP
500m from Yantian port

Shenzhen

Vietnam

Thailand

Bangkok

Ho Chi Minh

Ho Chi Minh

30,000sqft in Ho Chi Minh
3KM from Cat Lai port

Malaysia

Penang

Port Kelang

Singapore

Singapore

26,000sqft in Singapore
1.2km from KD container port

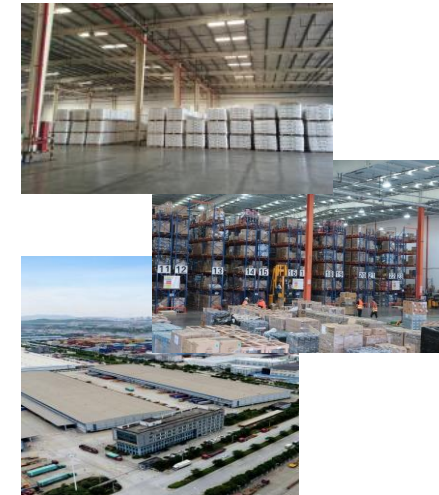
Singapore

Indonesia

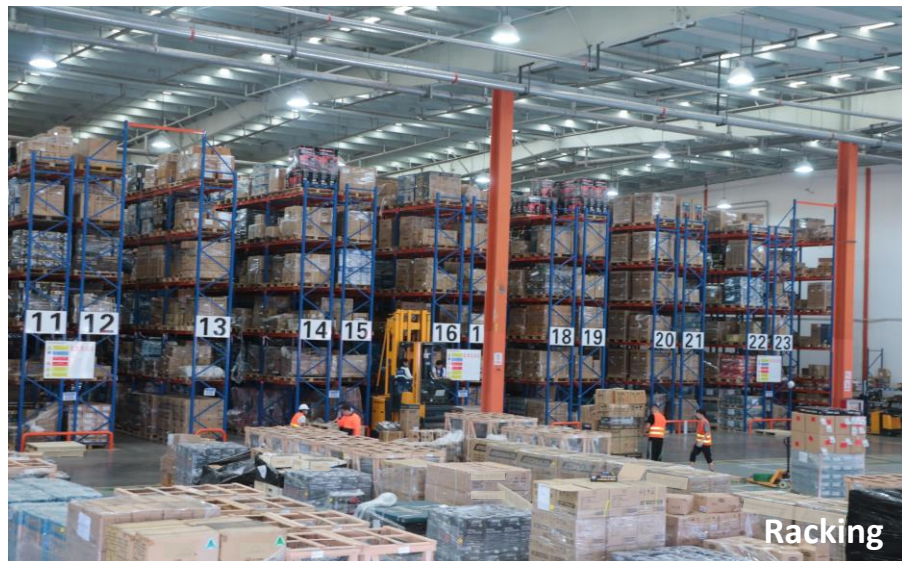
Jakarta

Jakarta

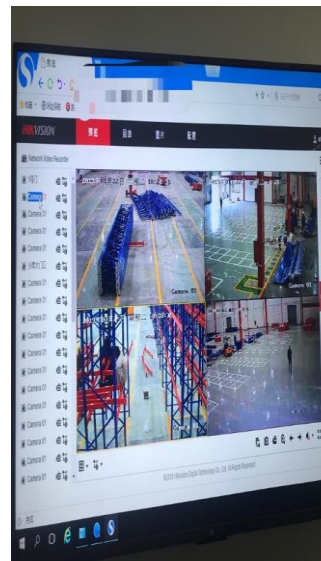
30,000sqft warehouse in Bekasi
30KM from Tanjung Priok



Our Origin Warehouses



Racking



CCTV MONITOR



QC Area



Forklifts



VNA



20,000

SKUs

100,000

SQFT

200,000

Buyer Consol Shipments

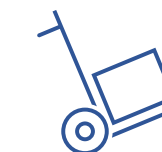


30

Cameras

7x24 800

Security &
Sprinkle System



10

VNAs, Forklifts



20

APs

Warehouse Facility

95

Days

Total
Live Operation Period

10,000

CBM

Average 300 CBM
per day for receiving

150

Containers

Average 8 containers
per day for shipping

24,000

Working Units

Average 540 working units
per hour for operation



Multiple Work Type

- Receiving & Put Away
- Replenishment
- Picking & Packing
- Staging & Loading

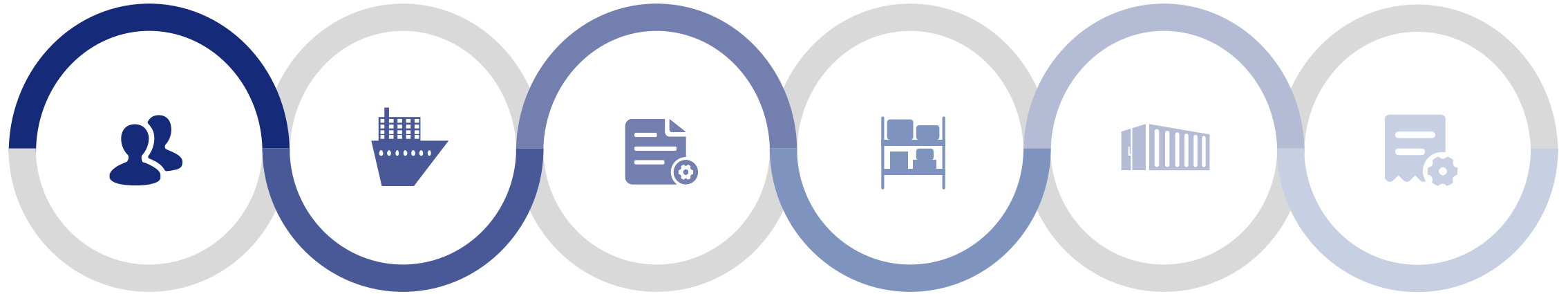


Customized Management Report

- Product Master File
- Inbound Activity Report
- Outbound Activity Report
- Work Efficiency Report
- Inventory Report

Optimization & Digitalization

Internal Operational Performance Management



Vendor Management

- Vendor Booking Status
- Booking Punctuality Ratio
- Outstanding Supplier List
- Vendor FCL Empty Container Performance
- Origin Haulage Management

Carrier Management

- Pending Booking Report
- Roll Space
- Blank Sailing
- Equipment Issue
- Reject Booking
- Transit Service Performance
- Carrier Allocation Performance
- Carrier
- Carrier speed and accuracy
- ATD/ATA
- Empty Container Status Management

Documentation Management

- Vendor Timely Update the documents
- Vendor Late Document Performance
- PSI Performance Report

CFS Management

- Cargo Package Compliance Performance
- Cargo Timely/Accuracy Performance
- Loading Remarks

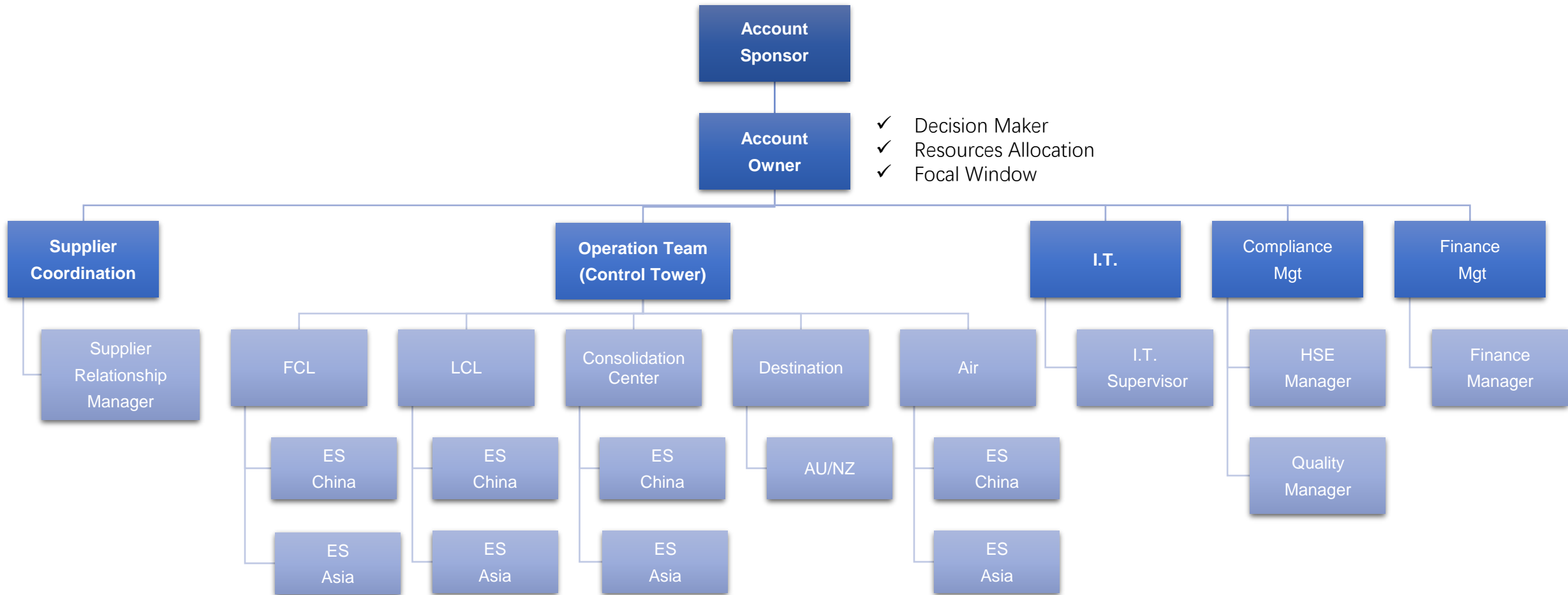
Container Management

- Container Utilization Management
- Destination Management
- Shipping Window Management

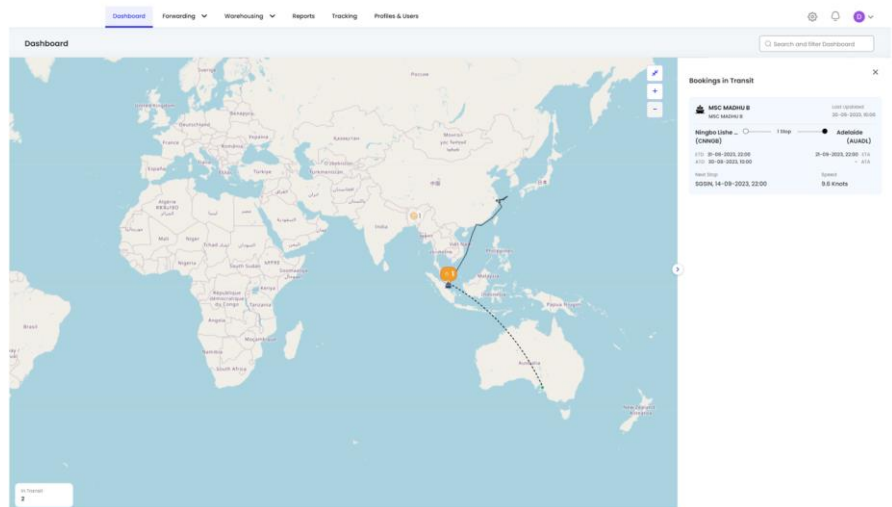
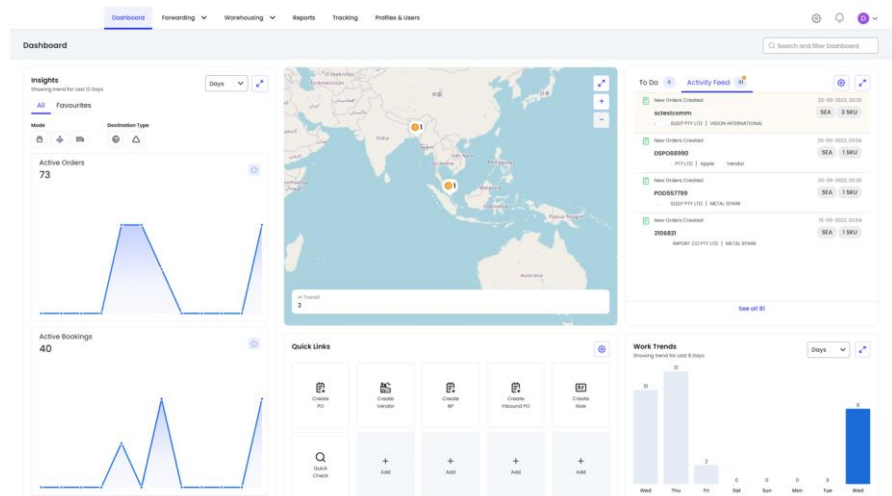
Billing Management

- Invoice Timely Issue Ratio
- Invoice Correction Issue Ratio
- AR Report

Key Account Management Structure



Digital Offers



Dashboard > Forwarding > Warehouse > Reports > Tracking > Profiles > Users

Purchase Orders / PO Details

scstestcomm Sea Ready for Booking Created by: Seath Chantana

PO Number: scstestcomm Client Name: PTY LTD Vendor Name: VISION INTERNATIONAL Destination: Melbourne(AUMEL) Order Lines: 3 Total CBM: 17616 Total Kgs: 23165 Total Order Value: Mixed Currency

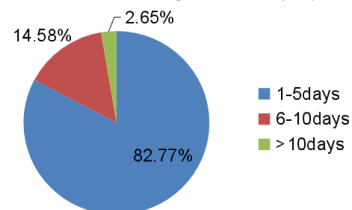
Basic Details Dates Product Details Product Details Confirmation Container Mode Selection

Search by SKU: X Quantity: All 3

PO LINE NO.	SKU	DESCRIPTION	STATUS	QUANTITY	GOODS READY DATE	ORIGIN	DESTINATION	DESTINATION ADDRESS
1	CC.skuhscode	description-po	Ordered	1000 (R:0)	14-09-2023	Ningbo Apt (CHNGB)	Melbourne (AUMEL)	
			Confirmed for Booking	2000	20-09-2023	Ningbo I Apt (CHNGB)	Melbourne (AUMEL)	
2	305-8020	NUT	Ordered	500 (R:270)	14-09-2023	Ningbo Apt (CHNGB)	Melbourne (AUMEL)	
			Confirmed for Booking	230	20-09-2023	Ningbo Apt (CHNGB)	Melbourne (AUMEL)	
3	305-8041	Upholstered Bed Base (Cortan I) V2 Queen4	Ordered	434 (R:134)	14-09-2023	Ningbo Apt (CHNGB)	Melbourne (AUMEL)	
			Confirmed for Booking	300	20-09-2023	Ningbo I Apt (CHNGB)	Melbourne (AUMEL)	

Late E-booking Performance Breakdown

Sea Late e-Booking Breakdown(PO)



ETD date=< Booking Date +17 Day via sea

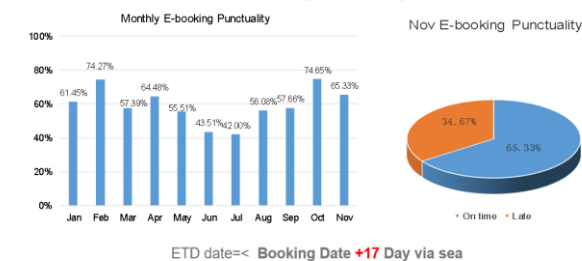
E-booking Releasing Punctuality

SEA	Sep		Oct		Nov	
	Shpt	0-3 day	Shpt	0-3 day	Shpt	0-3 day
NGB	120	100%	223	100%	159	100%
TAO	11	90% ▲	19	92% ●	17	96% ▲
XMN	91	98% ●	50	96% ▲	77	96% ●
YTN	54	95% ●	86	95% ●	17	94% ▲
SHA	658	92% ▲	430	95% ●	525	96% ▲

▲ Wait for carrier release booking

● Wait for carrier release booking

E-booking Punctuality (2022)



ETD date=< Booking Date +17 Day via sea

Eastrong Green Strategy

Eastrong Green Strategy

Environmental Objectives

- Consistently operating our own warehouses and fleet at high environmental standards as far as legally possible
 - Warehouse roof with Solar Panel
 - Electronic Forklift
 - Green Truck
- Eastrong targets to reduce 30% CO2e intensity by 2028 and achieve 50% CO2e by 2033.

HSE Team

- Setup dedicated team to ensure our actions & strategies are meeting our emission objectives, avoiding losses of cargoes at air & sea, and providing a healthier and safer environment for the employee

Partners Selection

- Focusing on develop greener ocean, air & rail products by alliance with / commitment (to) the vendors showing same value
 - Strategy alliance with MSK to move around 2000 Containers from China to Australia for ECO Delivery

Social Activities

- Management Engagement with local community
- Encourage staff and their family to attend ECO Activity

Digitalization

- Promote Paperless in our day-to-day operation
- Real-time measurement of the environmental impact of transport transactions
- Create visibility to optimize the moves & process, improve cost-control and environmental friendly

Better Care for Our Customers

Showcase - Eastrong Strategy Accounts

Solar



✓ Solar Module



✓ Solar Mounting Structure



✓ Solar Energy Storage

Auto



✓ Auto Parts



Volkswagen

✓ Vehicle



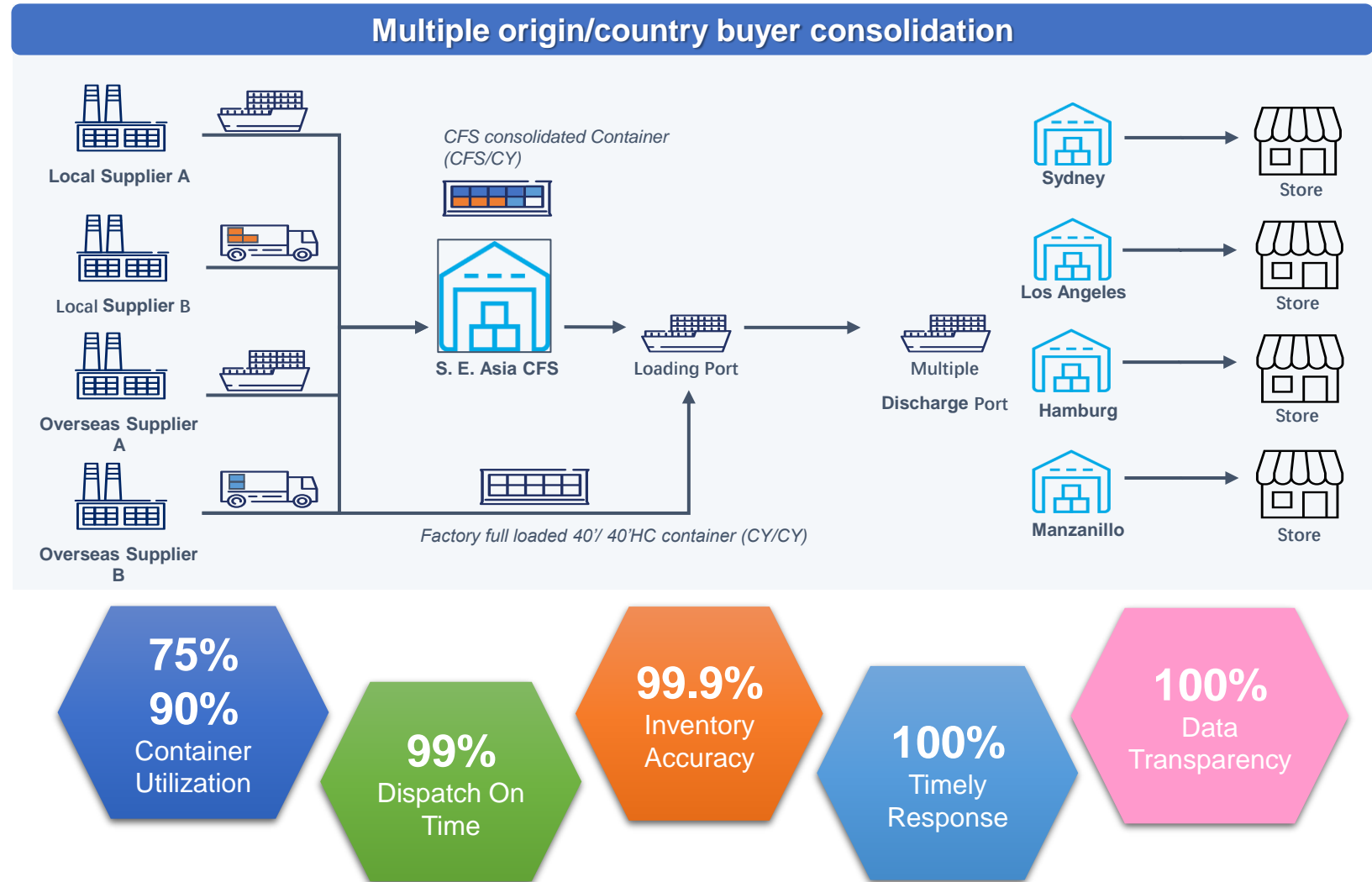
✓ Auto Aftermarket Products

* Above clients business under CIF/DDP/DAP/DDU Terms

Showcase - Major Retail Customer

- One of the Top 3 Retailer Companies
- 100+ Stores at destination
- 200+ Vendors Mainly from Eastern China
- Services Provided

- Origin Pick Up and Final Delivery
- Vendor Management
- Daily Inbound and Outbound
- Customs Declaration and Clearance
- Pick to Store
- Repackage and Labelling
- Palletization
- Tax Refund for Vendors
- Inventory Management
- Invoice and Packing List Preparation
- Air and Sea Freight Forwarding
- System Integration
- Multiple Country Consolidation



Global Service

Local Strength



Thank You

Looking forward to your inquiry...

- Email: office_sha@eastrongintl.com
- Website: https://eastrongintl.com/contact_us_en

